

Evacuation Routes - 1000 Level North

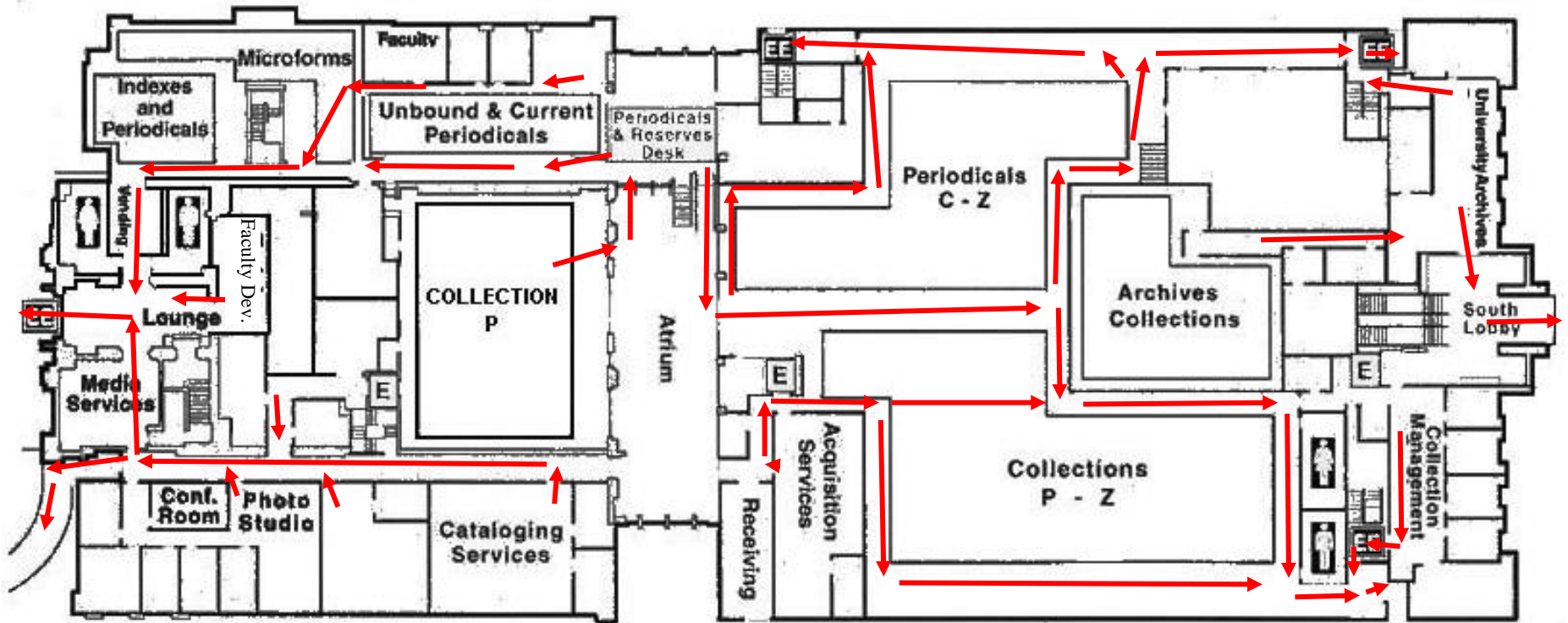
Cataloging/ Media Services/Faculty Development

During the day shift, assist in clearing the following areas: all offices on 1000 level North, including vending and lounge areas, restrooms, Faculty Development and microforms area.

Exit from the 1000 level emergency doors north of the lounge area or the Media Services ramp exit.

Patrons with disabilities may be assisted out of the building with other patrons through the emergency exits including the Media Services ramp on the 1000 level north or any of the south emergency exits.

Staff and patrons should gather to the south on the sidewalk south of the clock tower and to the north in the Commemorative Courtyard.



Evacuation Routes - 1000 Level South

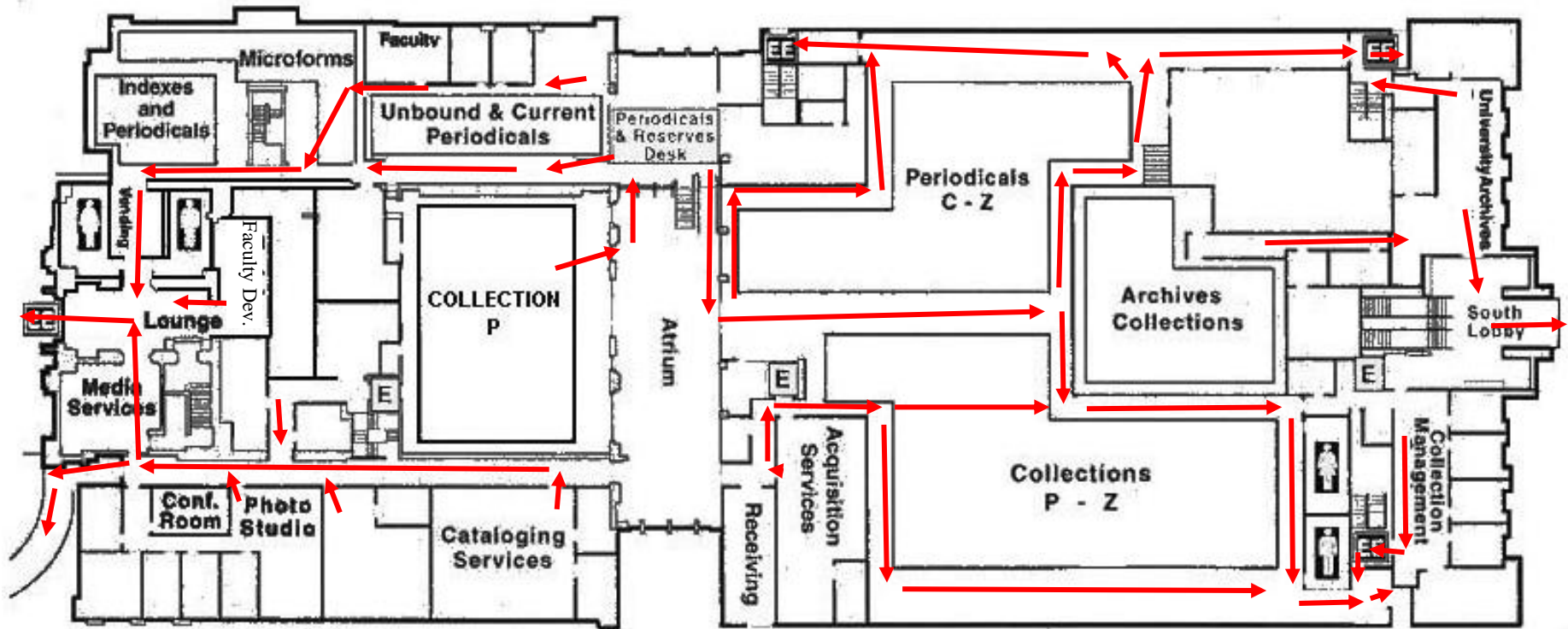
Acquisitions

During the day shift, clear all Acquisitions and Receiving offices, and then assist in clearing patrons from 1000 level south including stacks, restrooms, and faculty offices on the South West corner.

Exit through the nearest Emergency Exit on the South West or South East corner of the building.

Patrons with disabilities may be assisted out of the building with other patrons through the emergency exits including the Media Services ramp on the 1000 level north or any of the south emergency exits.

Staff and patrons should gather to the south on the sidewalk south of the clock tower and to the north in the Commemorative Courtyard.



Evacuation Routes - 1000 Level Atrium

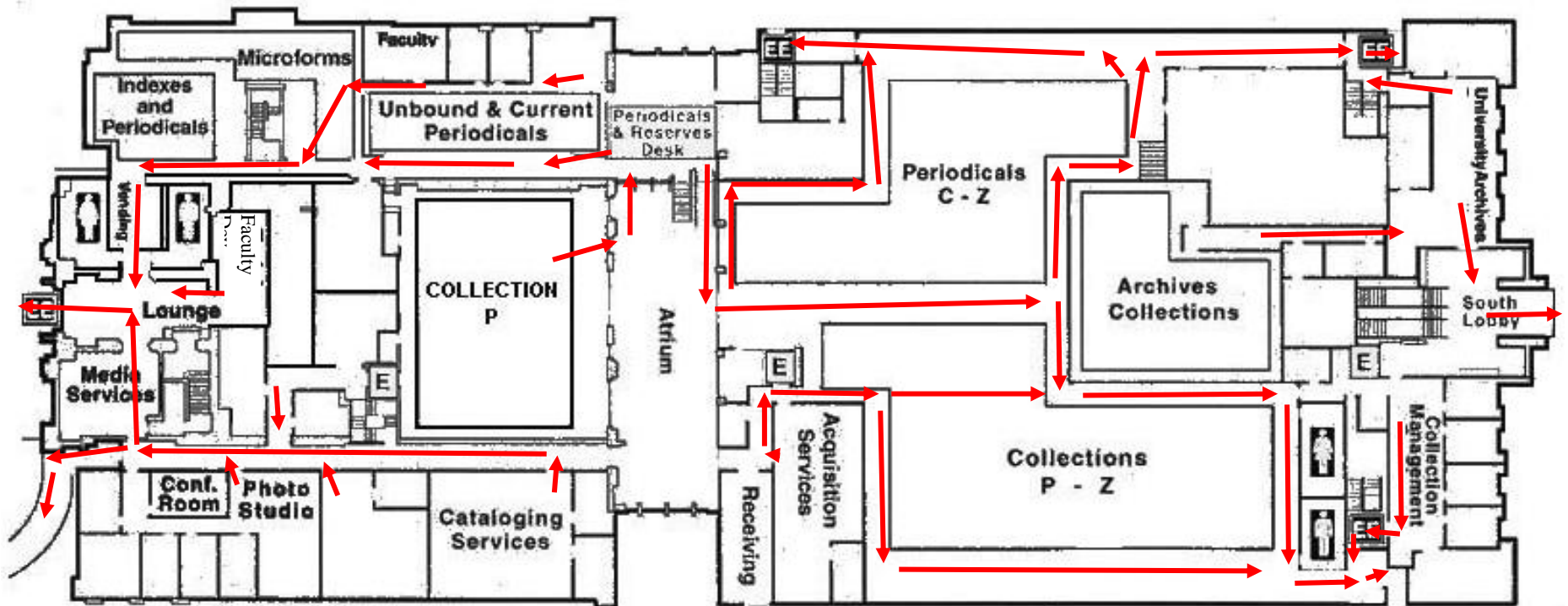
Periodicals/Reserve

Clear patrons from 1000 level North and South, including the periodicals reading room, the collection P stacks area, the Atrium, all Periodicals/Reserve stacks and offices, microforms, vending areas, restrooms, training room, and faculty offices in 1000 South.

During the day shift, assist Media Services and Cataloging Departments in clearing the 1000 level North, and assist Acquisitions in clearing patrons from 1000 level South.

Patrons with disabilities may be assisted out of the building with other patrons through the emergency exits including the Media Services ramp on the 1000 level north or any of the south emergency exits.

Staff and patrons should gather to the south on the sidewalk south of the clock tower and to the north in the Commemorative Courtyard.



Evacuation Routes - 1000 Level Archives

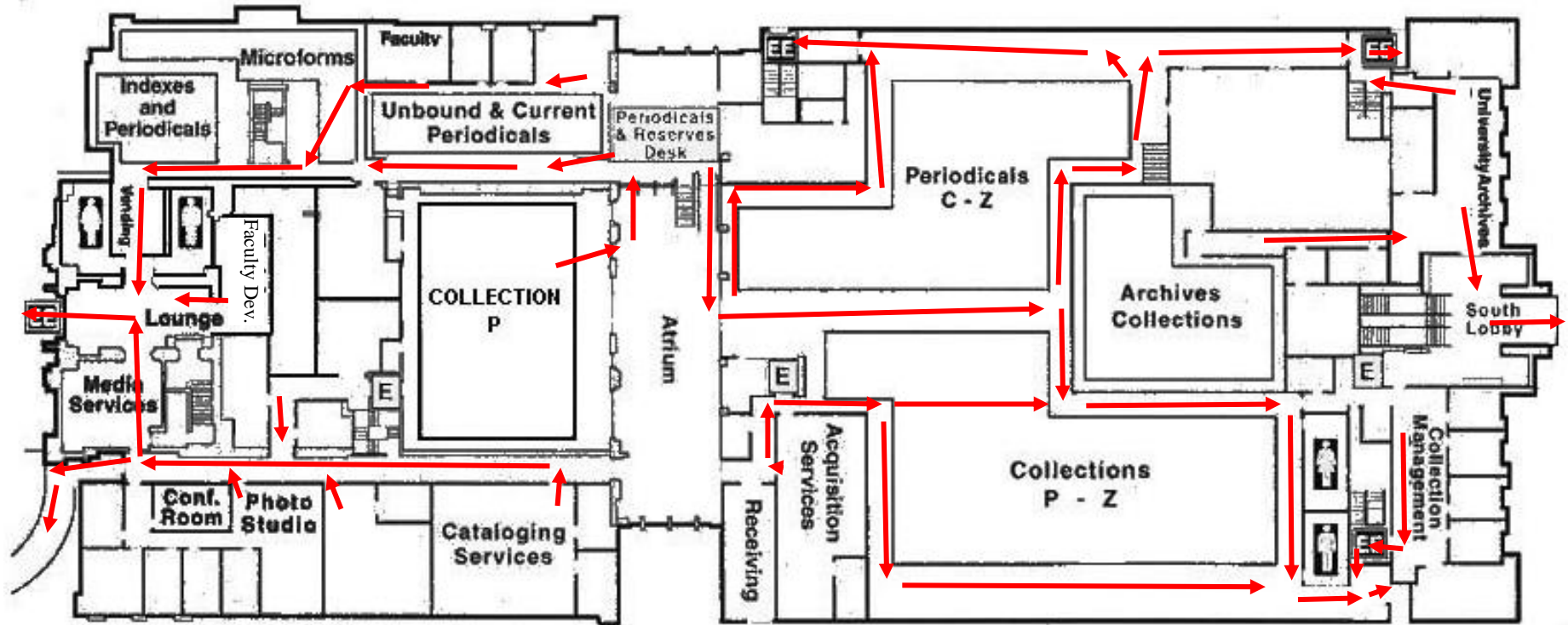
University Archives/IRAD

Clear all patrons from the Archives and Special Collections areas.

Exit through the South East emergency exit or the South Lobby door.

Patrons with disabilities may be assisted out of the building through the south lobby door or the emergency exits including the Media Services ramp on the 1000 level along with other patrons and staff.

Staff and patrons should gather to the south on the sidewalk south of the clock tower.



Evacuation Routes - 2000 Level

2000 north is cleared by Reference Staff.

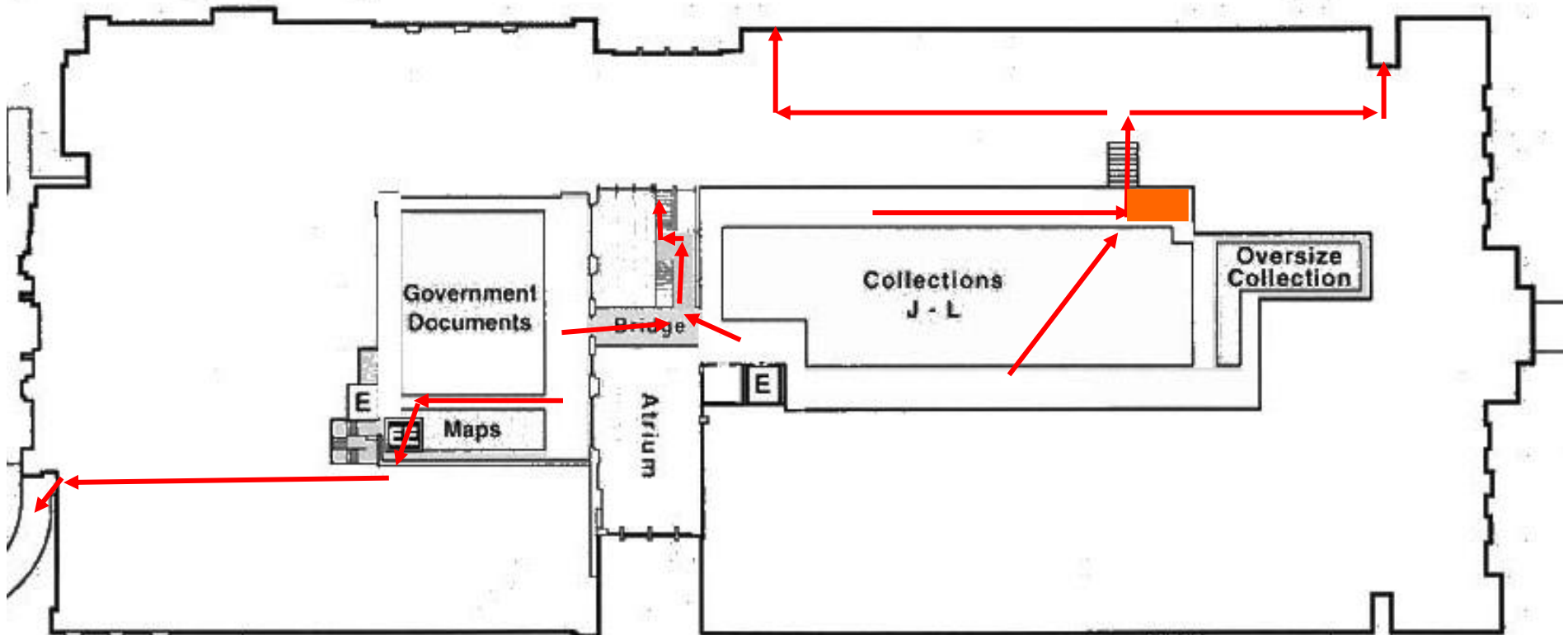
Patrons exit through Atrium doors and down to the 1000 level or through the Emergency exit doors at the northwest corner of Documents and down to 1000 north and then continue past Media Services to the north emergency exit ramp.

Patrons with disabilities may be assisted out the emergency exits unless in a wheelchair. When the fire alarm has been pulled, those patrons in wheelchairs will need to be assisted to the landing area of the south stairwell on 2000 level to wait for assistance. ■ See map. In all other evacuations, wheelchair patrons may be placed in elevators to take them to the 1000 level and emergency exits including the Media Services ramp there.

Staff and patrons should gather to the south on the sidewalk south of the clock tower and to the north in the Commemorative Courtyard.

2000 south is cleared by Circulation Staff.

Patrons exit through the Atrium doors and down to the 1000 level or by going down the stairs at the southeast corner of 2000 south and then on out the Emergency Exit at either the southeast or east side of the building.



Evacuation Routes - 3000 Level North

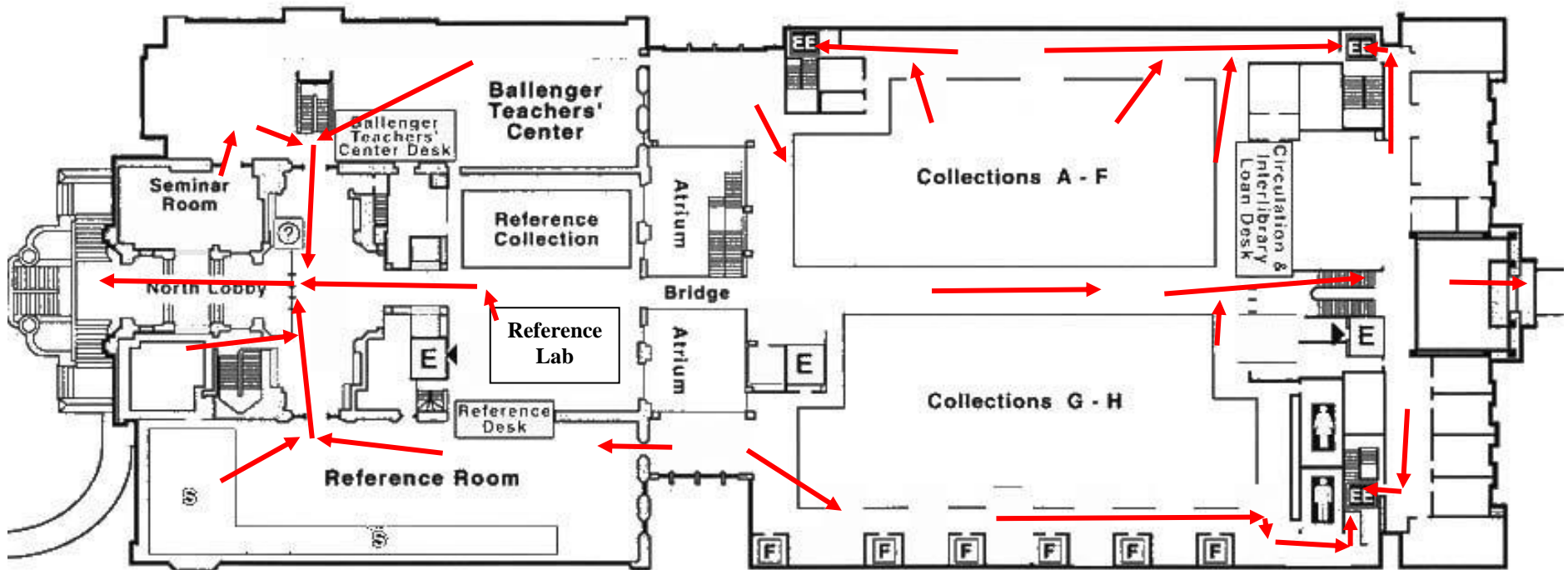
Reference/Ballenger/Collection Development

Clear all patrons from the 3000 Level North including the Reference rooms, the Reference lab, the Ballenger Teachers Center, all offices, the Seminar Room, the 2000 level north, the front lobby and the front foyer.

Exit through the north lobby doors.

Patrons with disabilities may be assisted out the emergency exits unless in a wheelchair. When the fire alarm has been pulled, those patrons in wheelchairs will need to be assisted to the Rescue Assistance System call box in the landing of the south building emergency exit stairwells. In all other evacuations, wheelchair patrons may be placed in elevators to take them to the 1000 level emergency exits including the Media Services exit ramp.

Staff and patrons should gather to the south on the sidewalk south of the clock tower and to the north in the Commemorative Courtyard.



Evacuation Routes - 3000 Level South

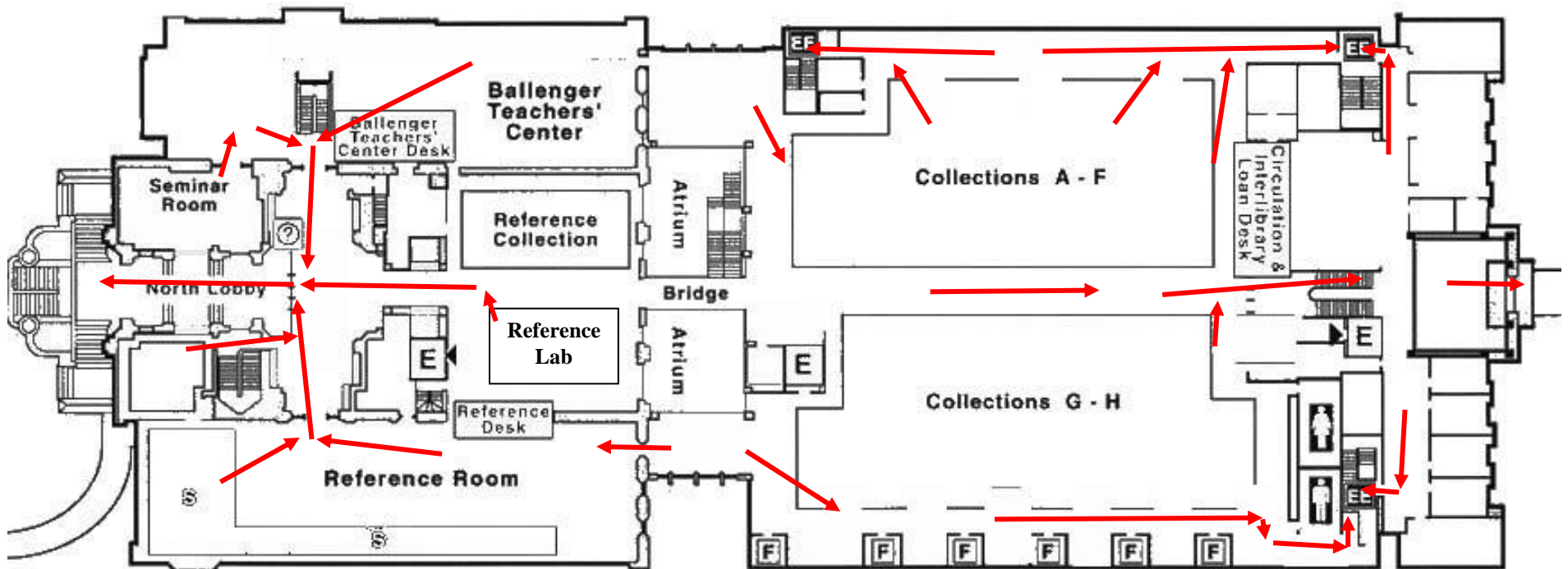
Circulation/ILL

Clear all patrons from the 3000 level south including all stacks, faculty study rooms, study tables, restrooms, carrels, interlibrary loan, faculty offices, and from the 2000 level south.

Exit through the nearest Emergency Exit: east, southeast, southwest, or the south entrance doors.

Patrons with disabilities may be assisted out the emergency exits unless in a wheelchair. When the fire alarm has been pulled, those patrons in wheelchairs will need to be assisted to the Rescue Assistance System call box in the landing of the south building emergency exit stairwells. In all other evacuations, wheelchair patrons may be placed in elevators to take them to the 1000 level emergency exits.

Staff and patrons should gather to the south on the sidewalk south of the clock tower and to the north in the Commemorative Courtyard.



Evacuation Routes - 4000 Level

Library Technology Services & Administration

Weekdays: 8 am to 5 pm

Administration clears patrons from the Admin Offices and from all rooms on the staff hallway.

LTS clears patrons from all other areas of the 4000 south level.

Exit through the east, southeast, or southwest Emergency Exit Doors.

Patrons with disabilities may be assisted out the emergency exits unless in a wheelchair. When the fire alarm has been pulled, those patrons in wheelchairs will need to be assisted to the Rescue Assistance System call box in the landing of the south or east emergency stairwells. In all other evacuations, wheelchair patrons may be placed in elevators to take them to the 1000 level and emergency exits including the Media Services ramp there.

Staff and patrons should gather to the south on the sidewalk south of the clock tower and to the north in the Commemorative Courtyard.

Weeknights and weekends

LTS clears patrons from all areas of the 4000 south level including rooms on the staff hallway.

Exit through the east, southeast, or southwest Emergency Exit Doors.

Staff in the staff hallway may exit through the Emergency Exit from the hallway.

